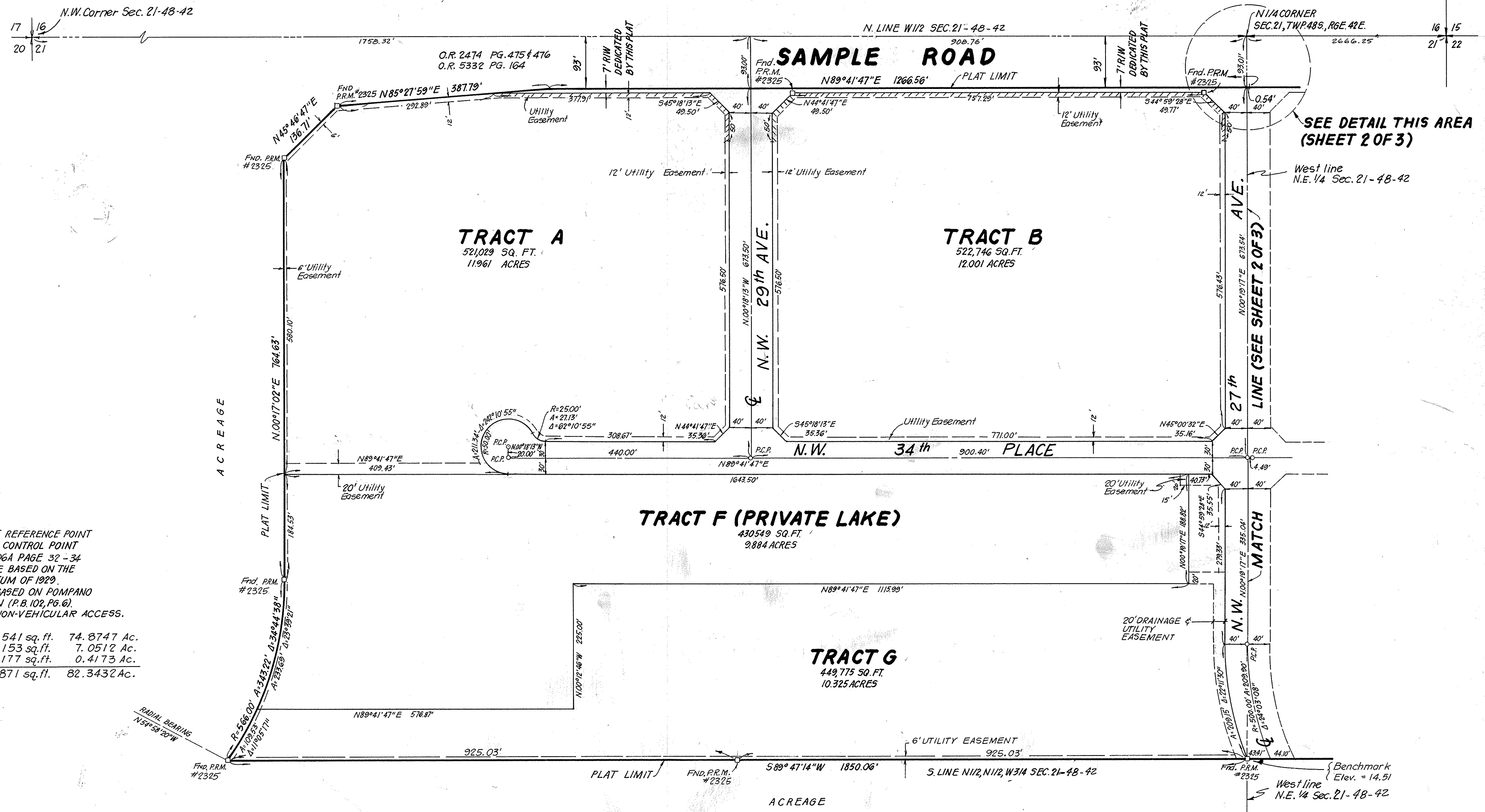
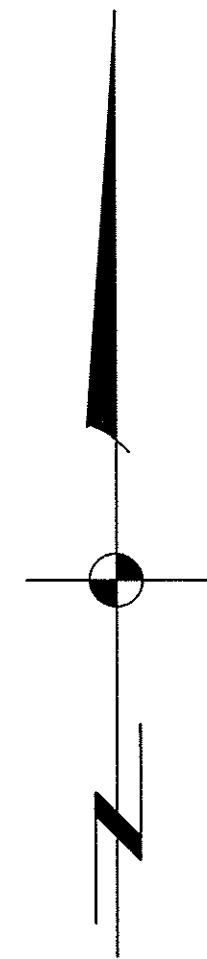
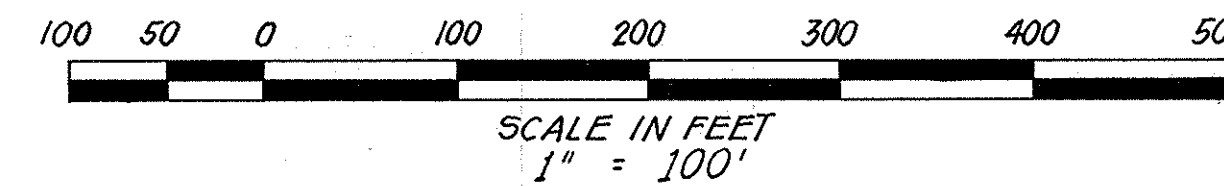


POMPANO INDUSTRIAL PARK THIRD ADDITION

A PARCEL OF LAND IN SECTION 21, TOWNSHIP 48 SOUTH, RANGE 42 EAST
BROWARD COUNTY, FLORIDA

PREPARED BY:
KEITH AND SCHNARS, P.A.
ENGINEERS · PLANNERS · SURVEYORS
1115 N.E. 4TH AVENUE
FORT LAUDERDALE, FLORIDA



SURVEY NOTES:

1. \square P.R.M. INDICATES PERMANENT REFERENCE POINT
2. \circ P.C.P. INDICATES PERMANENT CONTROL POINT
3. SURVEY DATA IN FIELD BOOK 206A PAGE 32-34
4. ELEVATIONS SHOWN HEREON ARE BASED ON THE NATIONAL GEODETIC VERTICAL DATUM OF 1929.
5. BEARINGS SHOWN HEREON ARE BASED ON POMPANO INDUSTRIAL PARK FIRST ADDITION (P.B. 102, PG. 6)
6. ----- INDICATES LINE OF NON-VEHICULAR ACCESS.
7. AREA TABULATION:

Tracts A thru G	3,261,541 sq. ft.	74.8747 Ac.
Internal R/W	307,153 sq. ft.	7.0512 Ac.
T/R/W Sample Rd.	18,177 sq. ft.	0.4173 Ac.
TOTAL	3,586,871 sq. ft.	82.3432 Ac.

DRC

PZ22-12000027
10/5/2022

DRC

PZ22-12000027
8/17/2022